



PRINCE Dr. K. VASUDEVAN COLLEGE OF ENGINEERING AND TECHNOLOGY

(Approved by AICTE, Affiliated to Anna University & ISO 9001:2015 Certified Institution)
Medavakkam-Mambakkam Main Road, Ponmar, Chennai-600127

ALUMNI FEEDBACK ANALYSIS REPORT


FEEDBACK ON ACADEMIC PERFORMANCE AND ITS ENRICHMENT / AMBIENCE OF THE INSTITUTION

DEPARTMENT OF COMPUTER SCIENCE AND ENGINEERING

ACADEMIC YEAR: 2019-2020

RESPONDENTS: 25

| Strongly Agree (5), Agree (4), Neutral (3), Disagree (2), Strongly Disagree (1) | | | | | | |
|---|---|---|---|---|---|----|
| S.NO | ATTRIBUTES ON ACADEMIC PERFORMANCE | 1 | 2 | 3 | 4 | 5 |
| 1. | The curriculum and syllabus content were appropriate for my placement/ higher education. | 1 | 1 | 3 | 6 | 14 |
| 2. | The academic curriculum effectively helped me to develop analytical and problem-solving skills | 0 | 1 | 2 | 7 | 15 |
| 3. | The curriculum helped me to improve my creative thinking skills and knowledge / scope of the syllabus in enhancing entrepreneurship skills/ lifelong learning/ human values and ethics. | 0 | 1 | 3 | 5 | 16 |
| 4. | My academic performance and curriculum made me industry ready at the end of the program | 1 | 1 | 2 | 7 | 14 |
| 5. | The Career Counseling and Placement Cell provided ample on Campus and Off Campus placement opportunities | 1 | 1 | 3 | 8 | 12 |
| S.NO | ATTRIBUTES ON AMBIENCE | 1 | 2 | 3 | 4 | 5 |
| 6. | Adequate and well-equipped laboratories helped me acquire practical skill | 0 | 1 | 2 | 5 | 17 |
| 7. | Library and industry powered center facilities for the courses are more than adequate in our Institution | 1 | 1 | 1 | 6 | 16 |
| 8. | The institute provides adequate opportunities to participate in extracurricular activities - through sports facilities | 0 | 2 | 4 | 7 | 12 |
| 9. | Experiments in the lab courses are relation to the real life/time applications. | 1 | 0 | 5 | 6 | 13 |
| 10. | Overall the institution provides a conducive and peaceful environment for any person to study | 0 | 1 | 2 | 5 | 17 |


PRINCIPAL
PRINCE Dr. K. VASUDEVAN COLLEGE
OF ENGINEERING AND TECHNOLOGY
PONMAR, CHENNAI-600127



PRINCE Dr. K.VASUDEVAN COLLEGE OF ENGINEERING AND TECHNOLOGY

(Approved by AICTE, Affiliated to Anna University & ISO 9001:2015 Certified Institution)
Medavakkam-Mambakkam Main Road, Ponmar, Chennai-600127

ALUMNI FEEDBACK ANALYSIS REPORT

FEEDBACK ON ACADEMIC PERFORMANCE AND ITS ENRICHMENT / AMBIENCE OF THE INSTITUTION

DEPARTMENT OF COMPUTER SCIENCE AND ENGINEERING

ACADEMIC YEAR: 2019-2020

RESPONDENTS: 25

| Strongly Agree (5), Agree (4), Neutral (3), Disagree (2), Strongly Disagree (1) | | | | | | |
|---|---|---|---|---|---|----|
| S.NO | ATTRIBUTES ON ACADEMIC PERFORMANCE | 1 | 2 | 3 | 4 | 5 |
| 1. | The curriculum and syllabus content were appropriate for my placement/ higher education. | 1 | 1 | 3 | 6 | 14 |
| 2. | The academic curriculum effectively helped me to develop analytical and problem-solving skills | 0 | 1 | 2 | 7 | 15 |
| 3. | The curriculum helped me to improve my creative thinking skills and knowledge / scope of the syllabus in enhancing entrepreneurship skills/ lifelong learning/ human values and ethics. | 0 | 1 | 3 | 5 | 16 |
| 4. | My academic performance and curriculum made me industry ready at the end of the program | 1 | 1 | 2 | 7 | 14 |
| 5. | The Career Counseling and Placement Cell provided ample on Campus and Off Campus placement opportunities | 1 | 1 | 3 | 8 | 12 |
| S.NO | ATTRIBUTES ON AMBIENCE | 1 | 2 | 3 | 4 | 5 |
| 6. | Adequate and well-equipped laboratories helped me acquire practical skill | 0 | 1 | 2 | 5 | 17 |
| 7. | Library and industry powered center facilities for the courses are more than adequate in our Institution | 1 | 1 | 1 | 6 | 16 |
| 8. | The institute provides adequate opportunities to participate in extracurricular activities - through sports facilities | 0 | 2 | 4 | 7 | 12 |
| 9. | Experiments in the lab courses are relation to the real life/time applications. | 1 | 0 | 5 | 6 | 13 |
| 10. | Overall the institution provides a conducive and peaceful environment for any person to study | 0 | 1 | 2 | 5 | 17 |

PRINCIPAL
PRINCE Dr. K. VASUDEVAN COLLEGE
OF ENGINEERING AND TECHNOLOGY
PONMAR, CHENNAI-600127

PONMAR, CHENNAI-600127
OF ENGINEERING AND TECHNOLOGY
PRINCE Dr. K. VASUDEVAN COLLEGE
PRINCIPAL



PRINCE Dr. K. VASUDEVAN COLLEGE OF ENGINEERING AND TECHNOLOGY

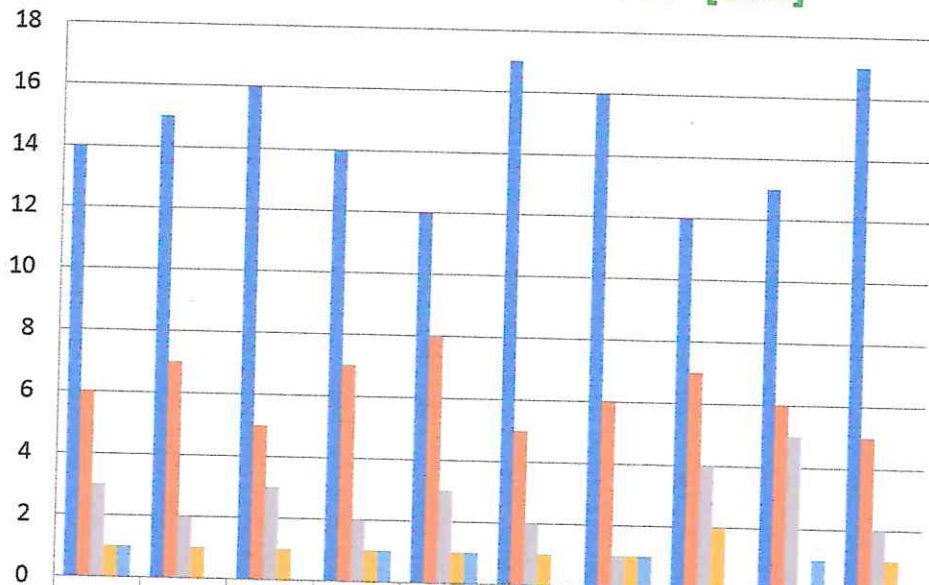
(Approved by AICTE, Affiliated to Anna University & ISO 9001:2015 Certified Institution)
Medavakkam-Mambakkam Main Road, Ponmar, Chennai-600127

ALUMNI FEEDBACK ANALYSIS REPORT

FEEDBACK ON ACADEMIC PERFORMANCE AND ITS ENRICHMENT / AMBIENCE OF THE INSTITUTION

ALUMNI FEEDBACK 2019-2020 [CSE]

RESPONDENTS - 25



| | Q1 | Q2 | Q3 | Q4 | Q5 | Q6 | Q7 | Q8 | Q9 | Q10 |
|-----------------------|----|----|----|----|----|----|----|----|----|-----|
| Strongly Agree (5) | 14 | 15 | 16 | 14 | 12 | 17 | 16 | 12 | 13 | 17 |
| Agree (4) | 6 | 7 | 5 | 7 | 8 | 5 | 6 | 7 | 6 | 5 |
| Neutral (3) | 3 | 2 | 3 | 2 | 3 | 2 | 1 | 4 | 5 | 2 |
| Disagree (2) | 1 | 1 | 1 | 1 | 1 | 1 | 1 | 4 | 5 | 2 |
| Strongly Disagree (1) | 1 | 0 | 0 | 1 | 1 | 0 | 1 | 0 | 1 | 0 |

PRINCIPAL
PRINCE Dr. K. VASUDEVAN COLLEGE
OF ENGINEERING AND TECHNOLOGY
PONMAR, CHENNAI-600127



PRINCE Dr. K. VASUDEVAN COLLEGE OF ENGINEERING AND TECHNOLOGY

(Approved by AICTE, Affiliated to Anna University & ISO 9001:2015 Certified Institution)
Medavakkam-Mambakkam Main Road, Ponmar, Chennai-600127

ALUMNI FEEDBACK ANALYSIS REPORT

FEEDBACK ON ACADEMIC PERFORMANCE AND ITS ENRICHMENT / AMBIENCE OF THE INSTITUTION DEPARTMENT OF ELECTRONICS AND COMMUNICATION ENGINEERING

ACADEMIC YEAR: 2019-2020

RESPONDENTS: 22

| Strongly Agree (5), Agree (4), Neutral (3), Disagree (2), Strongly Disagree (1) | | | | | | |
|---|---|---|---|---|---|----|
| S.NO | ATTRIBUTES ON ACADEMIC PERFORMANCE | 1 | 2 | 3 | 4 | 5 |
| 1. | The curriculum and syllabus content were appropriate for my placement/ higher education. | 0 | 1 | 1 | 4 | 16 |
| 2. | The academic curriculum effectively helped me to develop analytical and problem-solving skills | 0 | 1 | 2 | 5 | 14 |
| 3. | The curriculum helped me to improve my creative thinking skills and knowledge / scope of the syllabus in enhancing entrepreneurship skills/ lifelong learning/ human values and ethics. | 0 | 1 | 2 | 4 | 15 |
| 4. | My academic performance and curriculum made me industry ready at the end of the program | 1 | 1 | 2 | 6 | 12 |
| 5. | The Career Counseling and Placement Cell provided ample on Campus and Off Campus placement opportunities | 0 | 1 | 3 | 5 | 13 |
| S.NO | ATTRIBUTES ON AMBIENCE | 1 | 2 | 3 | 4 | 5 |
| 6. | Adequate and well-equipped laboratories helped me acquire practical skill | 0 | 1 | 3 | 5 | 13 |
| 7. | Library and industry powered center facilities for the courses are more than adequate in our Institution | 1 | 1 | 1 | 6 | 13 |
| 8. | The institute provides adequate opportunities to participate in extracurricular activities - through sports facilities | 0 | 1 | 2 | 5 | 14 |
| 9. | Experiments in the lab courses are relation to the real life/time applications. | 1 | 1 | 3 | 6 | 11 |
| 10. | Overall the institution provides a conducive and peaceful environment for any person to study | 0 | 1 | 1 | 5 | 15 |

PRINCIPAL
PRINCE Dr. K. VASUDEVAN COLLEGE
OF ENGINEERING AND TECHNOLOGY
PONMAR, CHENNAI-600127



PRINCE Dr. K.VASUDEVAN COLLEGE OF ENGINEERING AND TECHNOLOGY

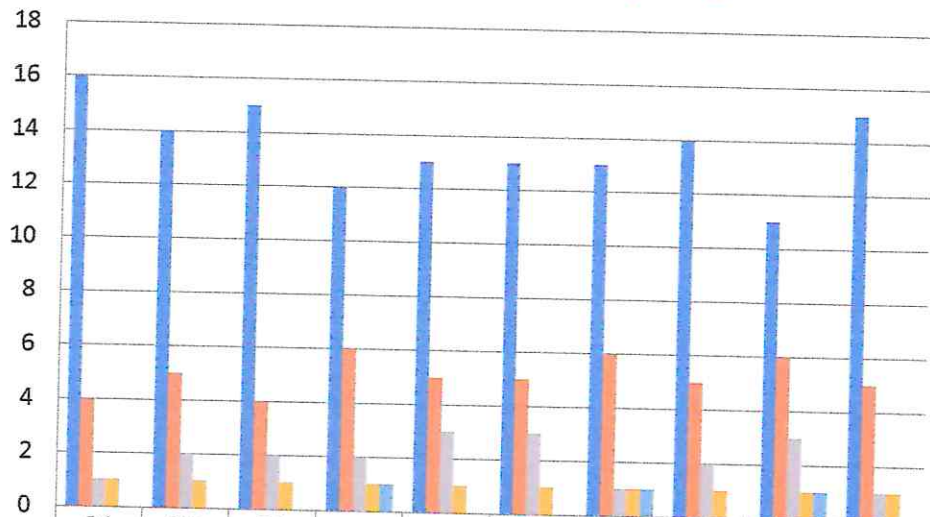
(Approved by AICTE, Affiliated to Anna University & ISO 9001:2015 Certified Institution)
Medavakkam-Mambakkam Main Road, Ponmar, Chennai-600127

ALUMNI FEEDBACK ANALYSIS REPORT

FEEDBACK ON ACADEMIC PERFORMANCE AND ITS ENRICHMENT / AMBIENCE OF THE INSTITUTION

ALUMNI FEEDBACK 2019-2020 [ECE]

RESPONDENTS - 22



| | Q1 | Q2 | Q3 | Q4 | Q5 | Q6 | Q7 | Q8 | Q9 | Q10 |
|-----------------------|----|----|----|----|----|----|----|----|----|-----|
| Strongly Agree (5) | 16 | 14 | 15 | 12 | 13 | 13 | 13 | 14 | 11 | 15 |
| Agree (4) | 4 | 5 | 4 | 6 | 5 | 5 | 6 | 5 | 6 | 5 |
| Neutral (3) | 1 | 2 | 2 | 2 | 3 | 3 | 1 | 2 | 3 | 1 |
| Disagree (2) | 1 | 1 | 1 | 1 | 1 | 1 | 1 | 1 | 1 | 1 |
| Strongly Disagree (1) | 0 | 0 | 0 | 1 | 0 | 0 | 1 | 0 | 1 | 0 |

PRINCIPAL
PRINCE Dr. K. VASUDEVAN COLLEGE
OF ENGINEERING AND TECHNOLOGY
PONMAR, CHENNAI-600127



PRINCE Dr. K. VASUDEVAN COLLEGE OF ENGINEERING AND TECHNOLOGY

(Approved by AICTE, Affiliated to Anna University & ISO 9001:2015 Certified Institution)
Medavakkam-Mambakkam Main Road, Ponmar, Chennai-600127

ALUMNI FEEDBACK ANALYSIS REPORT

FEEDBACK ON ACADEMIC PERFORMANCE AND ITS ENRICHMENT / AMBIENCE OF THE INSTITUTION

DEPARTMENT OF ELECTRICAL AND ELECTRONICS ENGINEERING

ACADEMIC YEAR: 2019-2020

RESPONDENTS: 12

| Strongly Agree (5), Agree (4), Neutral (3), Disagree (2), Strongly Disagree (1) | | | | | | |
|---|---|---|---|---|---|----|
| S.NO | ATTRIBUTES ON ACADEMIC PERFORMANCE | 1 | 2 | 3 | 4 | 5 |
| 1. | The curriculum and syllabus content were appropriate for my placement/ higher education. | 0 | 0 | 1 | 2 | 9 |
| 2. | The academic curriculum effectively helped me to develop analytical and problem-solving skills | 0 | 1 | 1 | 2 | 8 |
| 3. | The curriculum helped me to improve my creative thinking skills and knowledge / scope of the syllabus in enhancing entrepreneurship skills/ lifelong learning/ human values and ethics. | 1 | 1 | 1 | 2 | 7 |
| 4. | My academic performance and curriculum made me industry ready at the end of the program | 0 | 0 | 0 | 3 | 9 |
| 5. | The Career Counselling and Placement Cell provided ample on Campus and Off Campus placement opportunities | 1 | 1 | 1 | 1 | 8 |
| S.NO | ATTRIBUTES ON AMBIENCE | 1 | 2 | 3 | 4 | 5 |
| 6. | Adequate and well-equipped laboratories helped me acquire practical skill | 0 | 0 | 1 | 2 | 9 |
| 7. | Library and industry powered center facilities for the courses are more than adequate in our Institution | 1 | 1 | 1 | 1 | 8 |
| 8. | The institute provides adequate opportunities to participate in extracurricular activities - through sports facilities | 0 | 0 | 0 | 2 | 10 |
| 9. | Experiments in the lab courses are relation to the real life/time applications. | 0 | 1 | 1 | 1 | 9 |
| 10. | Overall the institution provides a conducive and peaceful environment for any person to study | 0 | 0 | 1 | 1 | 10 |

PRINCIPAL

PRINCE Dr. K. VASUDEVAN COLLEGE
OF ENGINEERING AND TECHNOLOGY
PONMAR, CHENNAI-600127

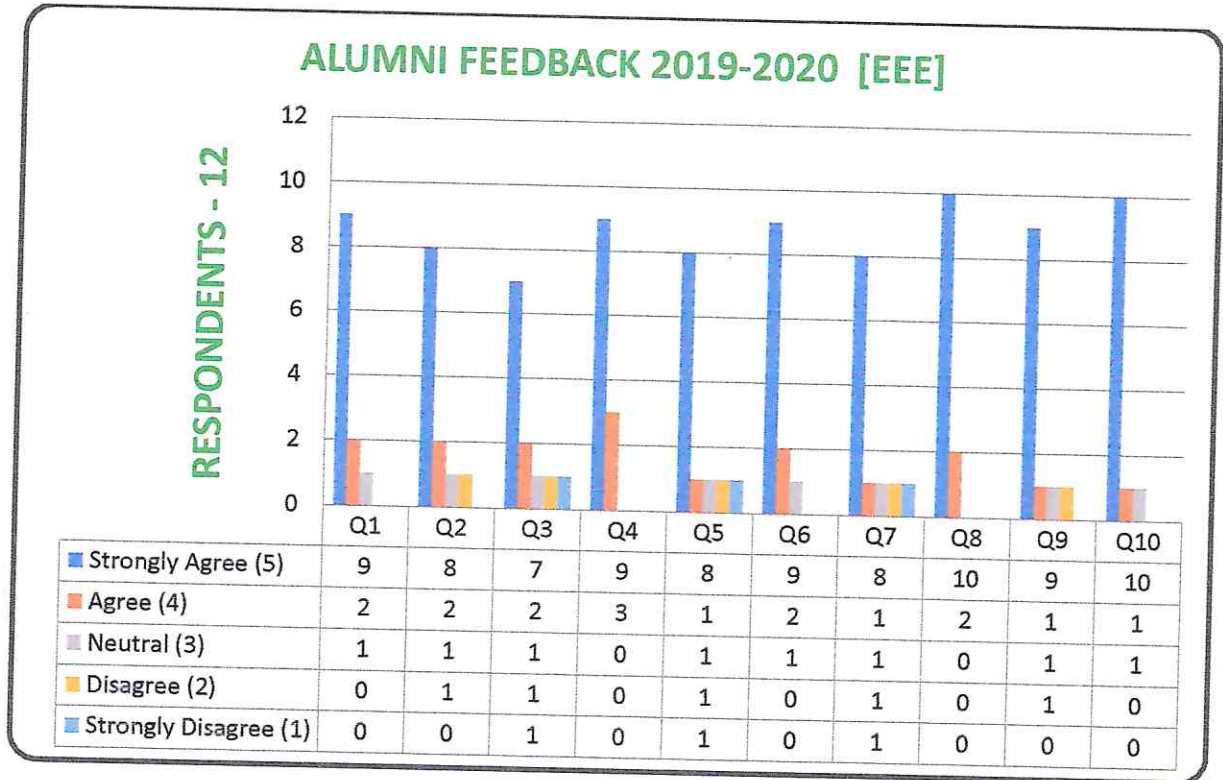


PRINCE Dr. K. VASUDEVAN COLLEGE OF ENGINEERING AND TECHNOLOGY

(Approved by AICTE, Affiliated to Anna University & ISO 9001:2015 Certified Institution)
Medavakkam-Mambakkam Main Road, Ponmar, Chennai-600127

ALUMNI FEEDBACK ANALYSIS REPORT

FEEDBACK ON ACADEMIC PERFORMANCE AND ITS ENRICHMENT / AMBIENCE OF THE INSTITUTION



PRINCIPAL
PRINCE Dr. K. VASUDEVAN COLLEGE
OF ENGINEERING AND TECHNOLOGY
PONMAR, CHENNAI-600127



PRINCE Dr. K. VASUDEVAN COLLEGE OF ENGINEERING AND TECHNOLOGY

(Approved by AICTE, Affiliated to Anna University & ISO 9001:2015 Certified Institution)
Medavakkam-Mambakkam Main Road, Ponmar, Chennai-600127

ALUMNI FEEDBACK ANALYSIS REPORT

FEEDBACK ON ACADEMIC PERFORMANCE AND ITS ENRICHMENT / AMBIENCE OF THE INSTITUTION

DEPARTMENT OF MECHANICAL ENGINEERING

ACADEMIC YEAR: 2019-2020

RESPONDENTS: 25

| Strongly Agree (5), Agree (4), Neutral (3), Disagree (2), Strongly Disagree (1) | | | | | | |
|---|---|---|---|---|---|----|
| S.NO | ATTRIBUTES ON ACADEMIC PERFORMANCE | 1 | 2 | 3 | 4 | 5 |
| 1. | The curriculum and syllabus content were appropriate for my placement/ higher education. | 1 | 1 | 2 | 7 | 14 |
| 2. | The academic curriculum effectively helped me to develop analytical and problem-solving skills | 1 | 1 | 3 | 8 | 12 |
| 3. | The curriculum helped me to improve my creative thinking skills and knowledge / scope of the syllabus in enhancing entrepreneurship skills/ lifelong learning/ human values and ethics. | 0 | 1 | 2 | 5 | 17 |
| 4. | My academic performance and curriculum made me industry ready at the end of the program | 0 | 2 | 4 | 7 | 12 |
| 5. | The Career Counselling and Placement Cell provided ample on Campus and Off Campus placement opportunities | 1 | 0 | 5 | 6 | 13 |
| S.NO | ATTRIBUTES ON AMBIENCE | 1 | 2 | 3 | 4 | 5 |
| 6. | Adequate and well-equipped laboratories helped me acquire practical skill | 1 | 1 | 3 | 6 | 14 |
| 7. | Library and industry powered center facilities for the courses are more than adequate in our Institution | 0 | 1 | 2 | 7 | 15 |
| 8. | The institute provides adequate opportunities to participate in extracurricular activities - through sports facilities | 0 | 1 | 3 | 5 | 16 |
| 9. | Experiments in the lab courses are relation to the real life/time applications. | 1 | 0 | 5 | 6 | 13 |
| 10. | Overall the institution provides a conducive and peaceful environment for any person to study | 0 | 1 | 2 | 6 | 16 |

PRINCIPAL
PRINCE Dr. K. VASUDEVAN COLLEGE
OF ENGINEERING AND TECHNOLOGY
PONMAR, CHENNAI-600127



PRINCE Dr. K. VASUDEVAN COLLEGE OF ENGINEERING AND TECHNOLOGY

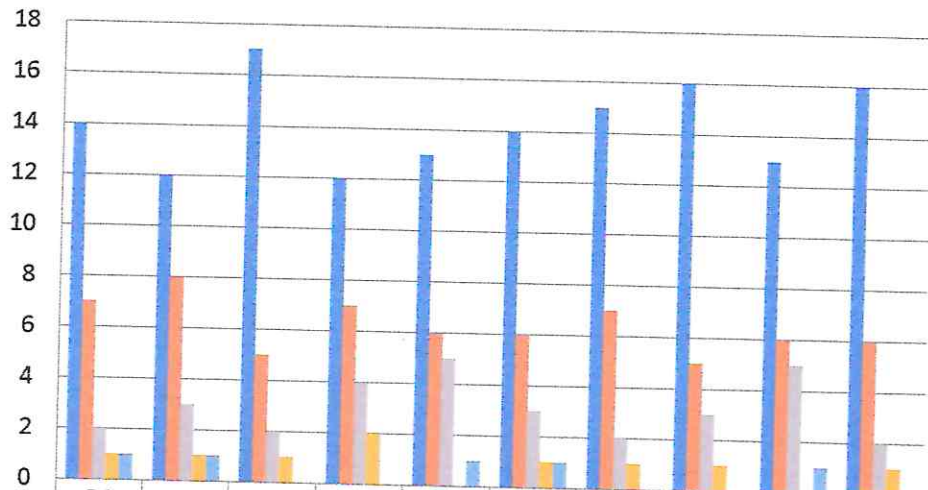
(Approved by AICTE, Affiliated to Anna University & ISO 9001:2015 Certified Institution)
Medavakkam-Mambakkam Main Road, Ponmar, Chennai-600127

ALUMNI FEEDBACK ANALYSIS REPORT

FEEDBACK ON ACADEMIC PERFORMANCE AND ITS ENRICHMENT / AMBIENCE OF THE INSTITUTION

ALUMNI FEEDBACK 2019-2020 [MECH]

RESPONDENTS - 25



| | Q1 | Q2 | Q3 | Q4 | Q5 | Q6 | Q7 | Q8 | Q9 | Q10 |
|-----------------------|----|----|----|----|----|----|----|----|----|-----|
| Strongly Agree (5) | 14 | 12 | 17 | 12 | 13 | 14 | 15 | 16 | 13 | 16 |
| Agree (4) | 7 | 8 | 5 | 7 | 6 | 6 | 7 | 5 | 6 | 6 |
| Neutral (3) | 2 | 3 | 2 | 4 | 5 | 3 | 2 | 3 | 5 | 6 |
| Disagree (2) | 1 | 1 | 1 | 2 | 0 | 1 | 1 | 1 | 0 | 1 |
| Strongly Disagree (1) | 1 | 1 | 0 | 0 | 1 | 1 | 0 | 0 | 1 | 0 |

PRINCIPAL
PRINCE Dr. K. VASUDEVAN COLLEGE
OF ENGINEERING AND TECHNOLOGY
PONMAR, CHENNAI-600127